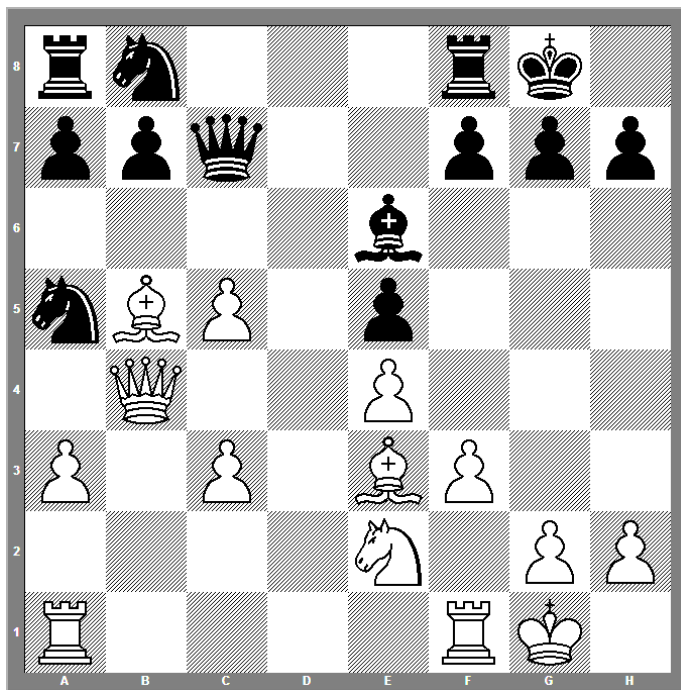


How to discover a great opening novelty in chess, in 7 steps only.

by FST/IM Jovan Petronic

Step 1: select a position of interest, ie:



Step 2: press the button:



Step 3: focus on the moving lights:

● \approx (0.42) Depth=12/21 556 kN/s

1. \approx (0.42): 16. ♖fb1 ♗bc6 17. ♕a4 a6 18. ♔d3 ♜ad8 19. ♗c1 ♞d7 20. ♞b6 ♞

2. \approx (0.36): 16. ♜ad1 ♗bc6 17. ♞b1 ♜ad8 18. ♞fe1 a6 19. ♔d3 ♗c4 20. ♔xc4

3. = (0.18): 16. ♗g3 ♗a6 17. ♔xa6 bxa6 18. ♞b2 ♞fc8 19. ♞ab1 ♗c4 20. ♞c

Step 4: wait:

● = (0.22) Depth=13/22 571 kN/s

1. = (0.22): 16. ♔d3 ♗bc6 17. ♞b5 ♞fd8 18. ♜ad1 a6 19. ♞b6 ♞xb6 20. cxb6

2. = (0.20): 16. ♖fb1 ♗bc6 17. ♕a4 a6 18. ♔d3 ♜ad8 19. ♗c1 ♞e7 20. ♔e2 f

3. = (0.12): 16. ♜ad1 ♗a6 17. ♔xa6 bxa6 18. c6 ♞ac8 19. ♔f2 ♗xc6 20. ♞c5

Step 5: wait:

| | | | |
|---|----------|----------|----------|
| ● | = (0.16) | Depth=16 | 583 kN/s |
|---|----------|----------|----------|

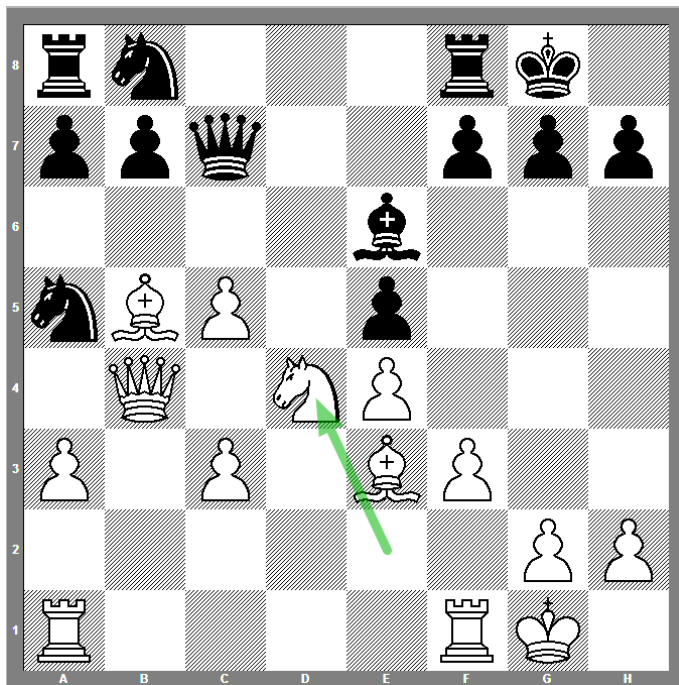
1. = (0.16): 16. ♖fb1 ♜bc6 17. ♚a4 a6 18. ♙xc6 ♜xc6 19. ♜g3 ♜fd8 20. ♜d1
2. = (0.14): 16. ♜ad1 ♜a6 17. ♙xa6 bxa6 18. ♜d5 ♜fb8 19. ♚a4 ♜b5 20. c4 ♜
3. = (0.12): 16. ♙d3 ♜bc6 17. ♚b5 ♜fd8 18. ♜ad1 a6 19. ♚b6 ♚xb6 20. cxb6

Step 6: wait:

| | | | |
|---|----------|----------|----------|
| ● | ± (0.74) | Depth=22 | 522 kN/s |
|---|----------|----------|----------|

1. ± (0.74): 16. ♜d4 exd4 17. cxd4 ♜bc6 18. ♚c3 ♜ad8 19. d5 ♙xd5 20. ex
2. = (0.14): 16. ♖fb1 ♜a6 17. ♙xa6 bxa6 18. c4 ♜fd8 19. ♙f2 ♜ab8 20. ♚c3 ♜
3. = (0.00): 16. a4 ♜bc6 17. ♚b2 ♜b3 18. ♜ab1 ♜ca5 19. ♜fd1 a6 20. ♙d3 ♜

Step 7: you're done! Celebrate!



The end.

Bibliography:

Anand, Viswanathan 2810 - Wang Hao 2731 1-0
E25 Tata Steel-A 73rd (4) 18.01.2011 [Anand]

© 13 November 2013